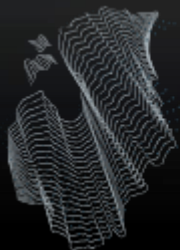


GIS MEETS BUSINESS: **LET'S MAKE IT HAPPEN!**



Aleksandrs Popovs | PhD MBA MIS
Business Architect, SAP Nordics & Baltics



BALTIC
GEOSPATIAL
INFORMATION TECHNOLOGY
CONFERENCE

THE BEST RUN



THE BEST RUN



Enable every enterprise to become an

Intelligent, sustainable enterprise



100,300+
Employees



180+
Countries



92%
of the Forbes
Global 2000



440,000+
Customers

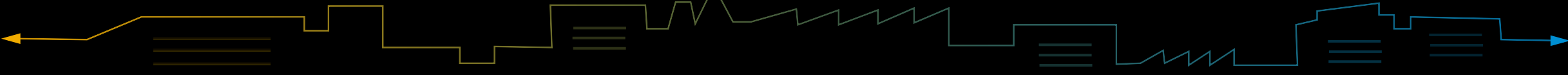


80%
SMEs



25
Industries





Challenges

- ❑ Slow and error-prone integration between GIS and enterprise business system decreases productivity
- ❑ Increase in field technician workload due to incorrect spatial information related to business processes
- ❑ Manual workarounds with paper maps or online GIS services
- ❑ Poor asset data quality hinders process efficiencies
- ❑ etc...

Impact

Boost productivity

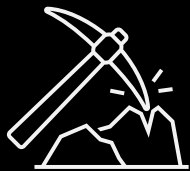
Reduce Costs

Simplified data access and analysis

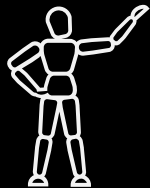
Capabilities

- ✓ Seamless and bi-directional visualization of GIS and SAP spatial data
- ✓ Create and manage spatial data in SAP
- ✓ Real-time access to SAP business data from enterprise GIS apps
- ✓ Multiple geometry types, business, and reference layers
- ✓ Use on any device via browser
- ✓ etc...

SAP & GIS solutions are solving **cross-industry & industry-specific business challenges** across the whole value chain



Enterprise Asset Management



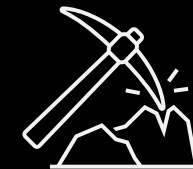
Field Service Management



Real Estate and Land Management

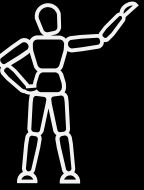


Transportation Management



Enterprise Asset Management

- ✓ **Minimize** operational costs
- ✓ **Increase** customer satisfaction
- ✓ **Improve** productivity



Field Service Management

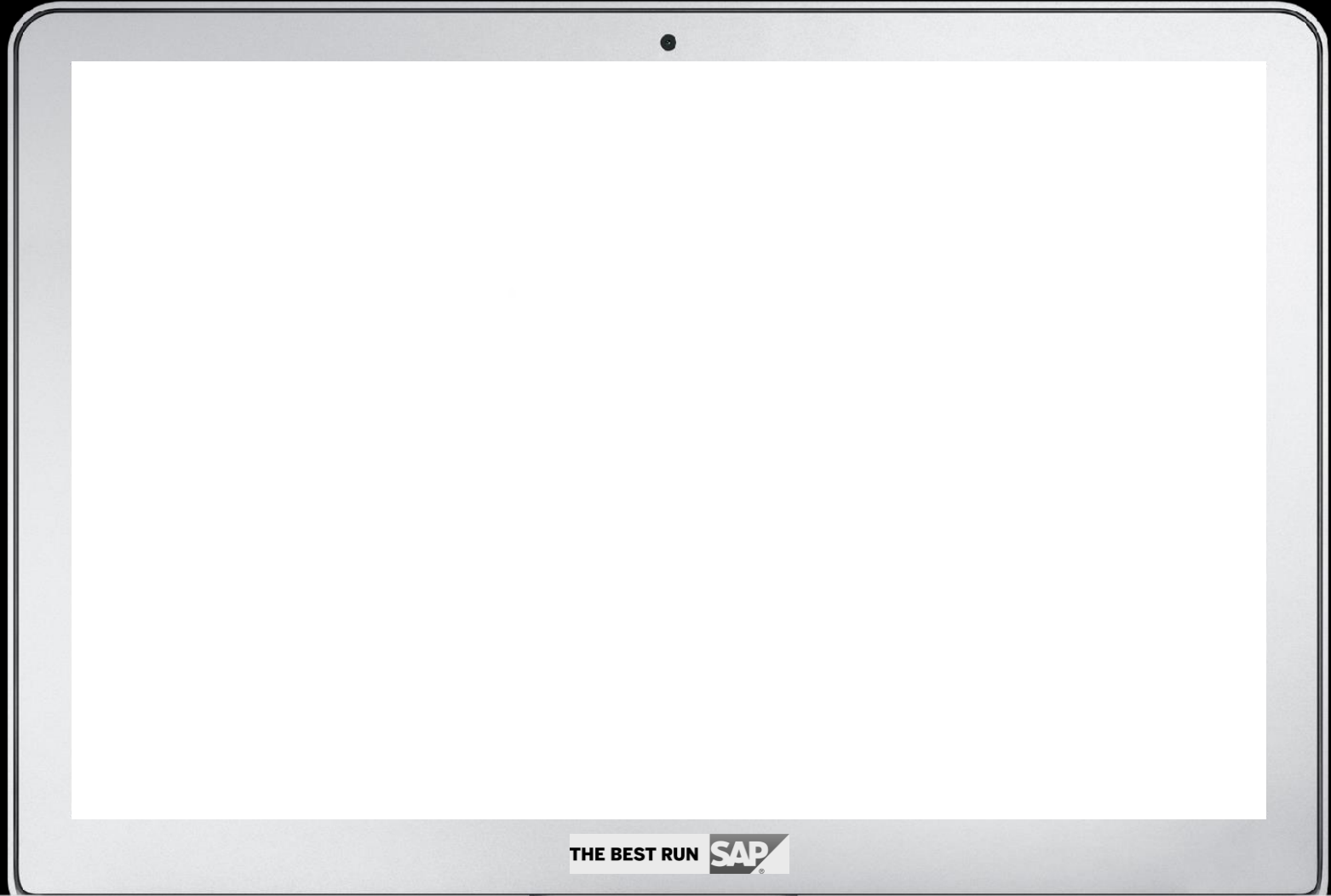
- ✓ Increase efficiency
- ✓ Reduce costs
- ✓ Optimize resource utilization & Improve performance





Real Estate Management

- ✓ **Improve** portfolio performance
- ✓ **Reduce** costs
- ✓ **Reduce** vacancies



Transportation Management

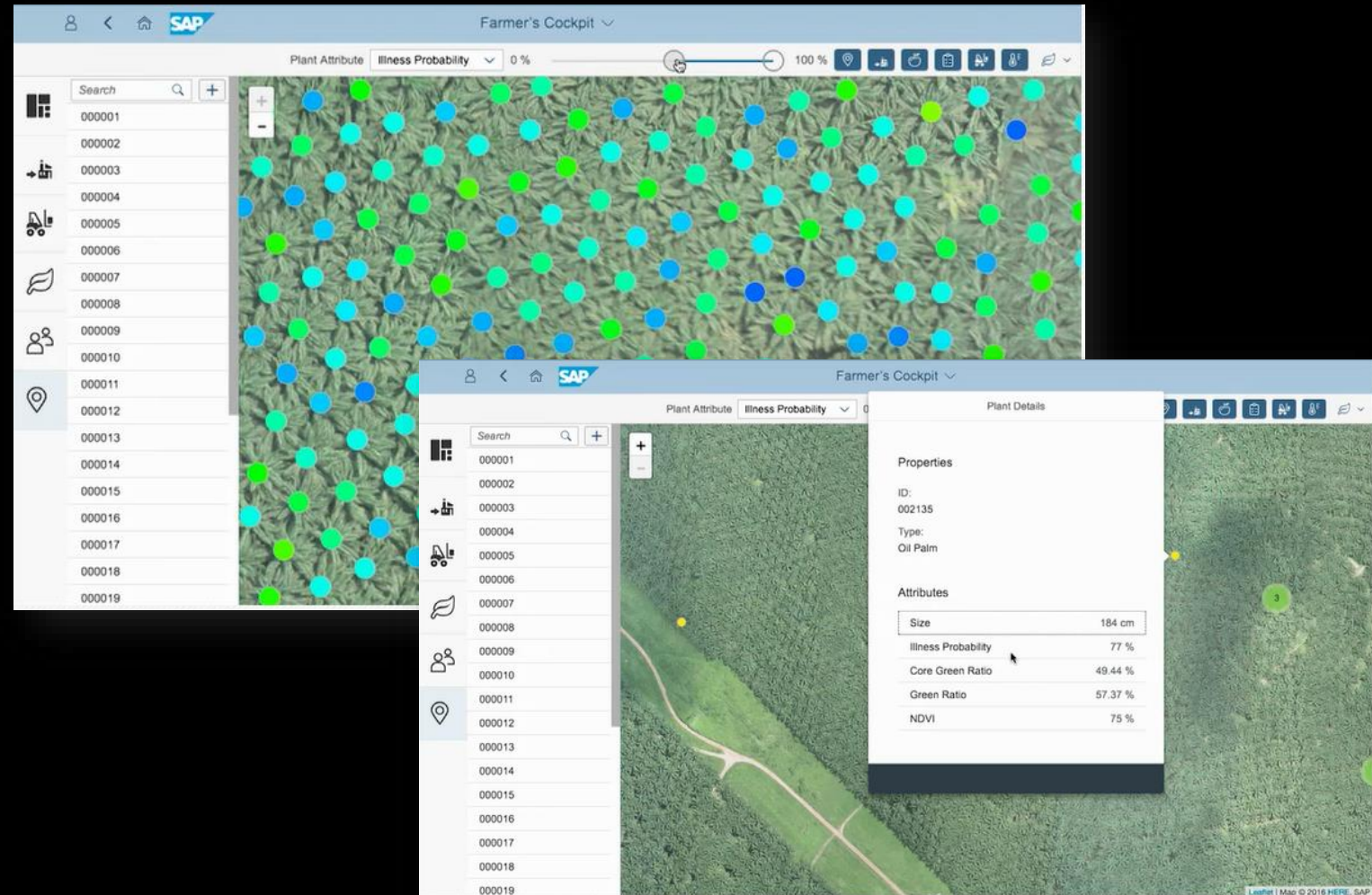
- ✓ **Increase** efficiency
- ✓ **Improve** delivery outcomes
- ✓ **Reduce** costs
- ✓ **Increase** profitability
- ✓ **Optimize** resource utilization & **Improve** performance

Intelligent Business Processes enabled by SAP & GIS

Connected Forestry:

Each single tree is a data point. Drone image was mapped to GPS data.

Tree color points to probability of tree sickness. Corrective actions can be triggered accordingly.





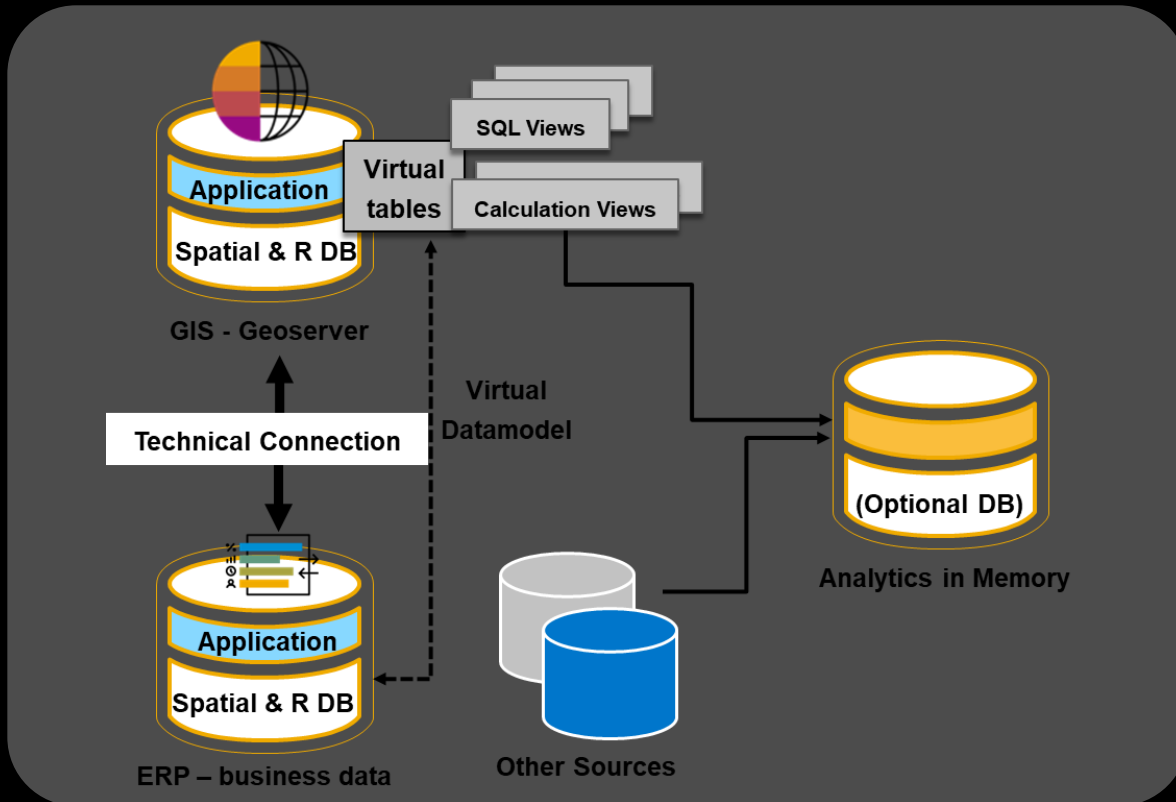
THE BEST RUN **SAP**

THE BEST RUN **SAP**

Intelligent Business Processes enabled by **SAP & GIS**

- ✓ **Multiple** use-cases
- ✓ **Reduce** human-factor
- ✓ **Improve** operations

SAP & GIS solutions are solving **cross-industry & industry-specific business challenges** across the whole value chain



Example

Step 1: Data Provisioning – Data Federations

Step 2: Define Virtual Data Model (VDM) on top of Virtual Tables: Model the Data: Business and Geometries

Step 3: Create Virtual Data Model by combining Parcel and Geometries

Step 4: Consumption

The screenshot displays the SAP Geographical Enablement Framework interface. On the left, a sidebar shows the date '03 / 07 2022' and a 'Journal' section. The main area features a map of a region in Germany, including locations like Waren (Müritz), Müritz-Nationalpark, and Neubritz. A blue route is plotted on the map, and a pop-up window titled 'Replace Mainbus' shows a schedule for '3/7/2022, 10:20 AM' and '3/7/2022, 11:20 AM' with the technician 'Sophia Anderson'. On the right, a 'Technicians (8)' list includes: Dan Admin, Mike (engineer) Anderson, Rowena K, Nicholas Mokare, Caitlyn Rowland, James (dispatcher) Taylor, George White, and Jack Williams. The SAP logo and 'THE BEST RUN' slogan are visible at the bottom of the interface.

Show activities, technicians and planned routes on the map

THE BEST RUN 

Geographical Enablement Framework

- ✓ Boost productivity
- ✓ Reduce costs
- ✓ Simplify data access and analysis

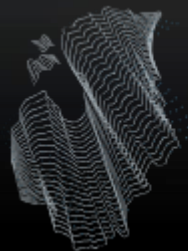
THE BEST RUN 

GIS MEETS BUSINESS: LET'S MAKE IT HAPPEN!

Q&A



Aleksandrs Popovs | PhD MBA MIS
Business Architect, SAP Nordics & Baltics



BALTIC
GEOSPATIAL
INFORMATION TECHNOLOGY
CONFERENCE

THE BEST RUN 