



#StandWithUkraine

# Digital Rail Baltica. The Role of GIS in the Digitalization of Rail Baltica Construction Supervision

Vaidas Ulenskas,  
GIS Team Leader at RB Rail AS



Co-financed by the Connecting Europe  
Facility of the European Union

# Speakers

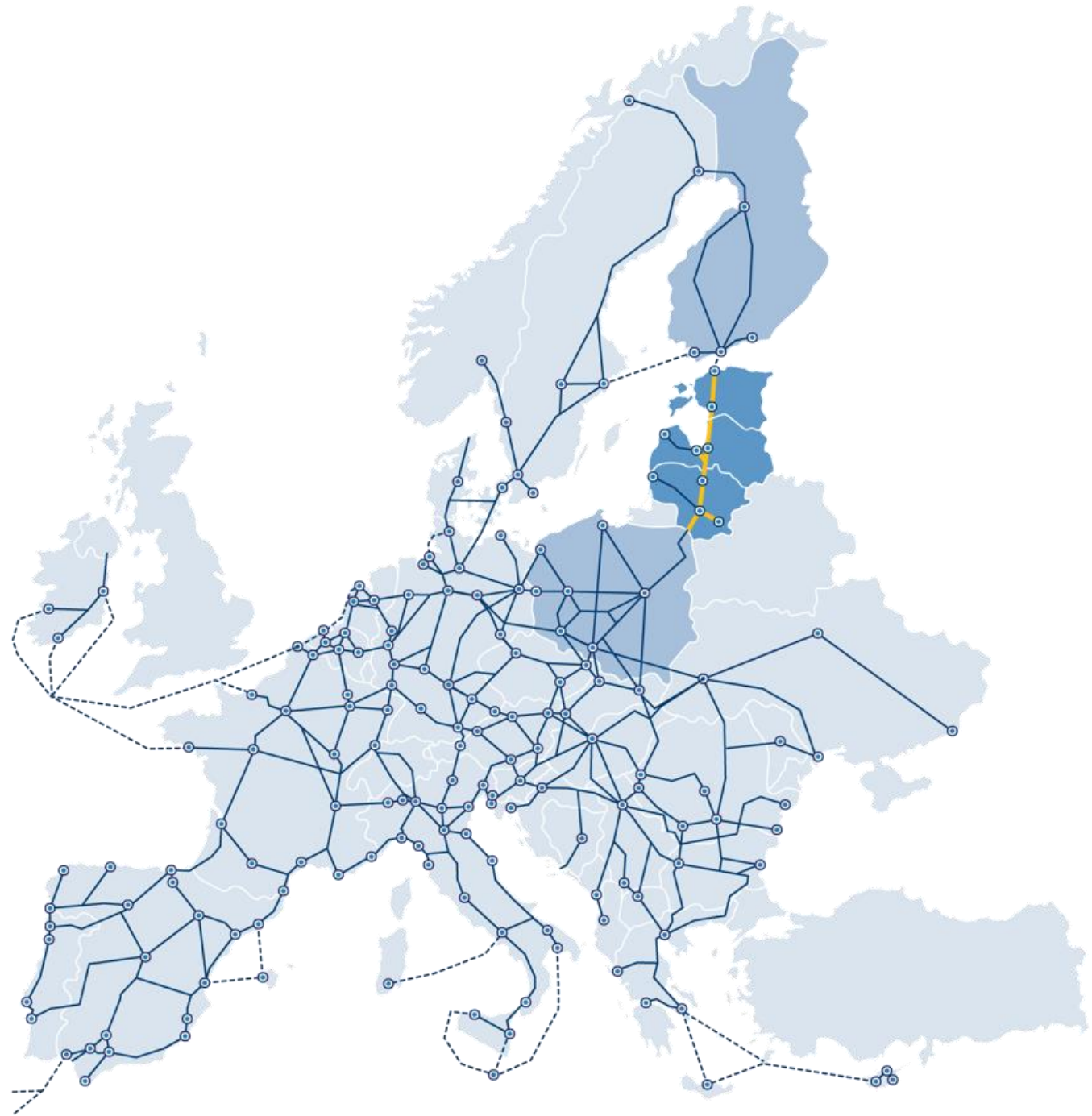


**Vaidas Ulenskis**  
GIS Team Leader

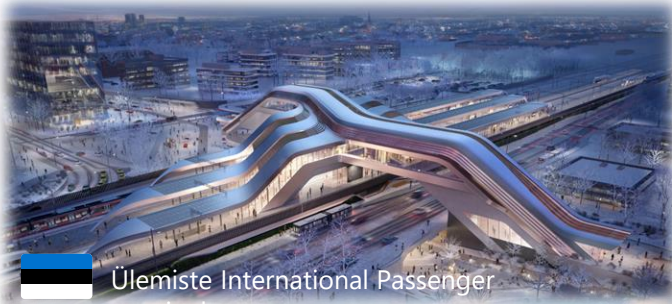
- M.Sc. Civil Engineering
- In Rail Baltica Global Project since March 2019
- “Involved” with GIS since 2011

# Connected Baltics in a Connected Europe

**We are delivering seamless mobility for people, goods and services to accelerate social and economic development in the Baltics and beyond**



# Basis for a New Economic Corridor and Military Mobility



 Ülemiste International Passenger terminal




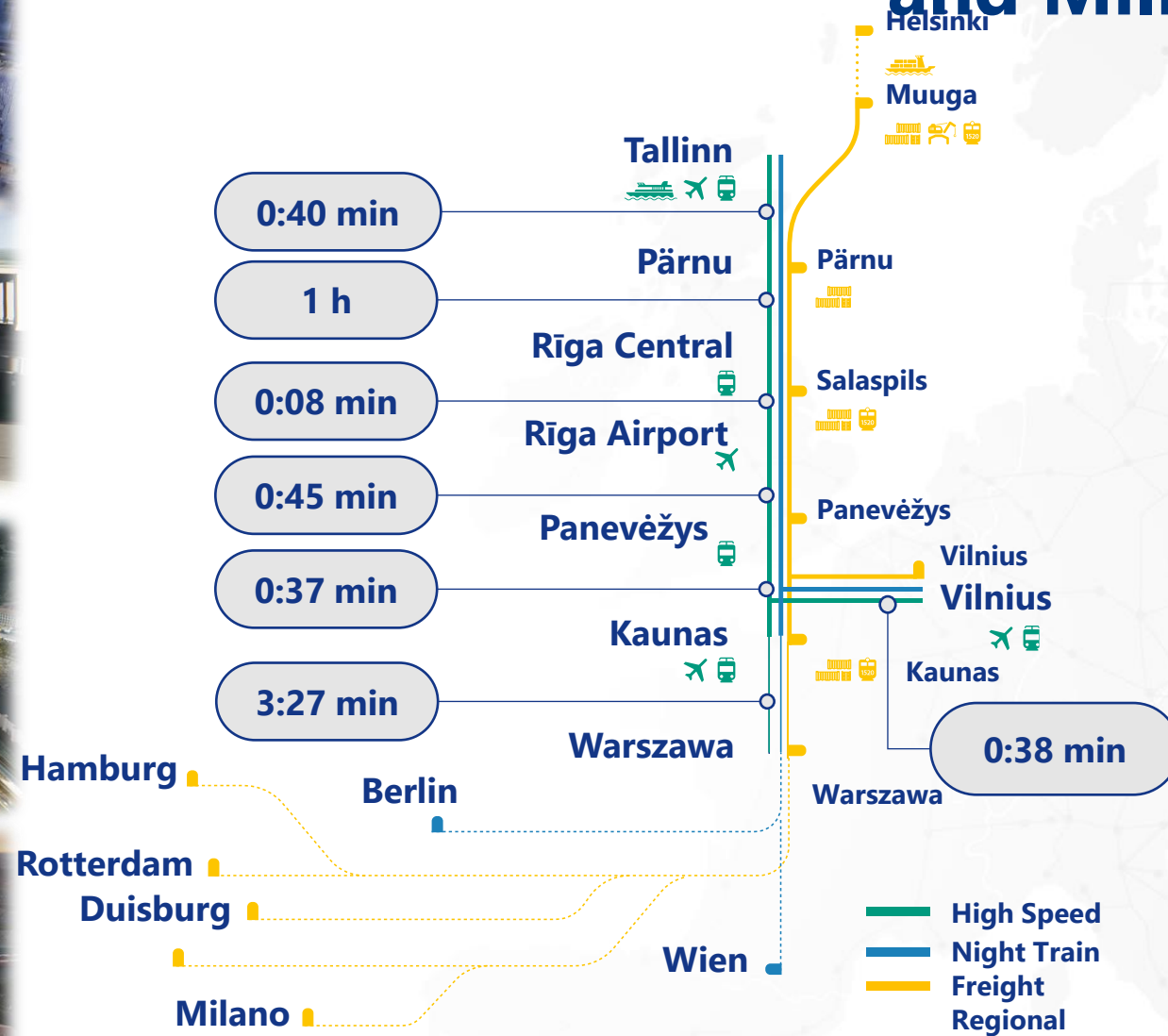
 RIX Airport Station











 Riga Central Station



 Vilnius Connect



-  870 km greenfield railway infrastructure
-  1435 mm Double track
-  ERTMS Level 2 + FRMCS\*
-  Electrified 2x25kV AC
-  Maximum length of freight trains: 1050m
-  Axle load 25t
-  Design speed: 249 km/h for passenger trains  
120 km/h for freight trains
-  SE-C (Swedish) loading gauge

-  High Speed
-  Night Train
-  Freight
-  Regional

# Rail Baltica project timeline

2023

- Mainline designs' completion
- Delivery programme 2030
- Market readiness for material supply & logistics (incl. consolidated material procurements)
- New generation Cost-Benefit Analysis and Business Plan
- Decisions to ensure operational readiness (IGA on infra management and exploitation model, rolling stock etc.)

2024-2027

- **Construction!**



2028-2030

- Testing
- Validation
- Operations & full interoperability ensured
- New economic and security network corridor developed

Construction in progress

Gradual start of operations

# GIS - Significant Part of Rail Baltica Digital Twin

## Internal & External training and Support service

- Provide basic training materials to RB GIS users

## Operational & Maintenance

- Create Rail Baltica Digital Twin
- Prepare GIS for Infrastructure Manager

## Monitoring the Construction process

- Collect and analyze data from the field to monitor the construction process
- Create assignments for field workers

## BIG Data Management

- BIM
- AIM
- Raster
- LAS
- 3D

## Data Management System

- Create, Collect internal and external GIS data
- Convert non-GIS data to GIS data
- GIS data accessibility
- GIS integration with other software's

## Global Project Partners Engagement

- Create GIS connections between RB Rail AS and partners (BENs, IBs, Designers, etc.)

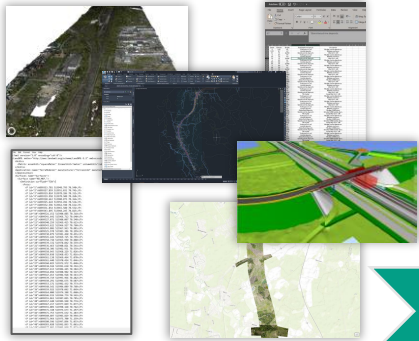
## Public Engagement

- Provide official information about Rail Baltica Global Project to public and 3<sup>rd</sup> parties
- Open Data Portal

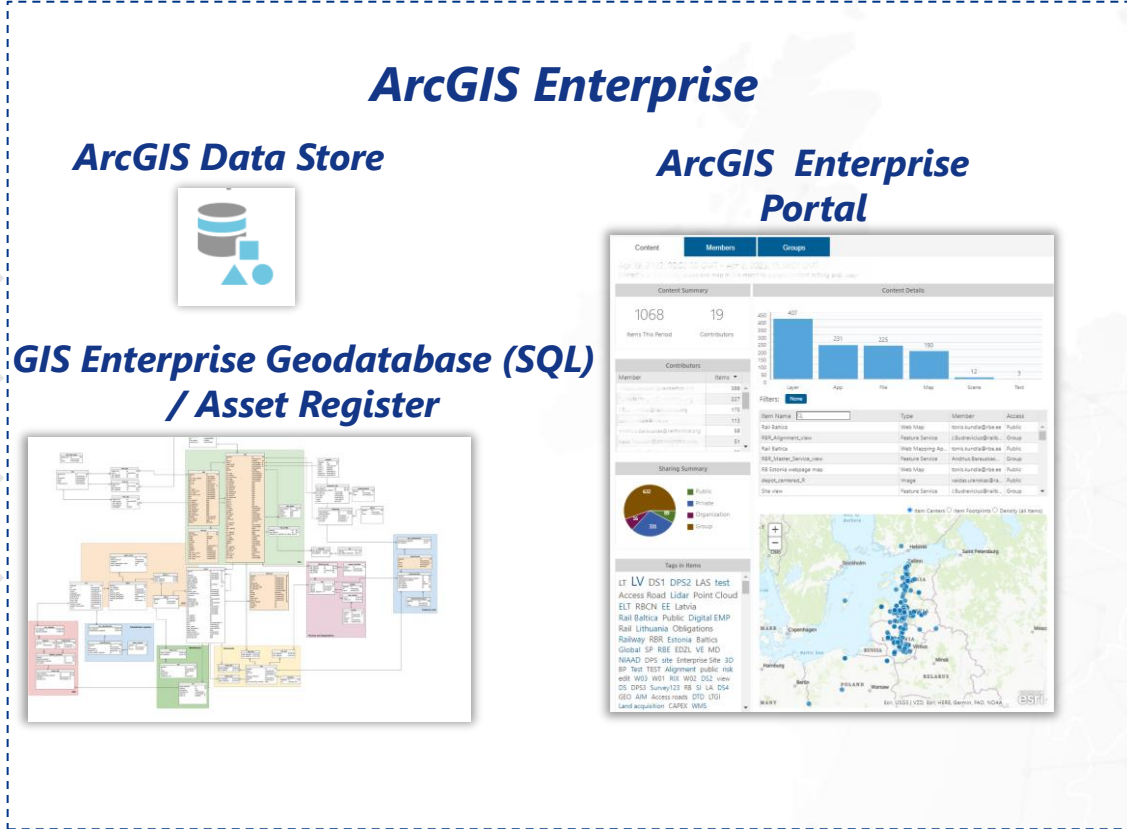
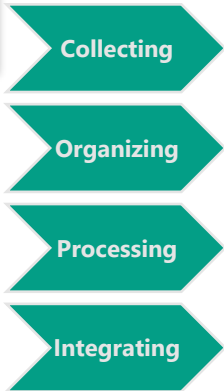


# Data Workflows

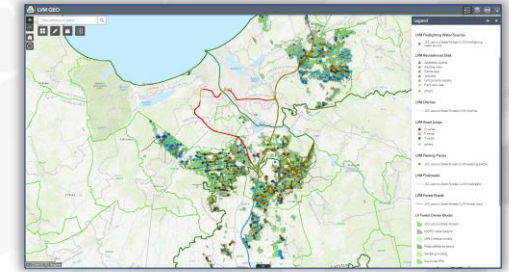
## Design Data



## National/Worldwide Databases Open Data Portals



## 2D maps



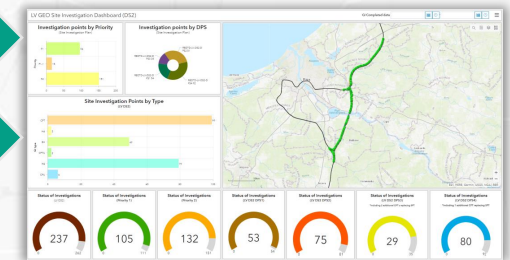
## 3D maps



2D maps

3D Maps

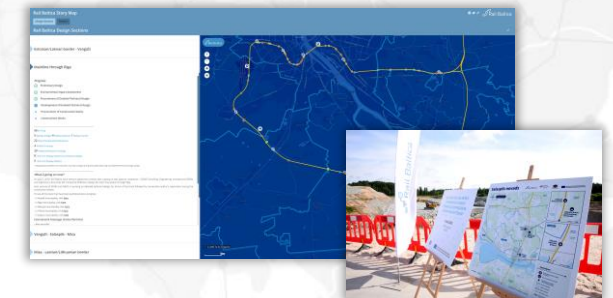
## Dashboards



Dashboards

Public Data

## Public data

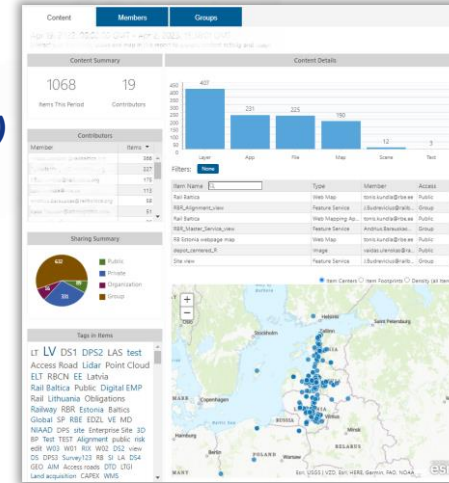


## ArcGIS Enterprise

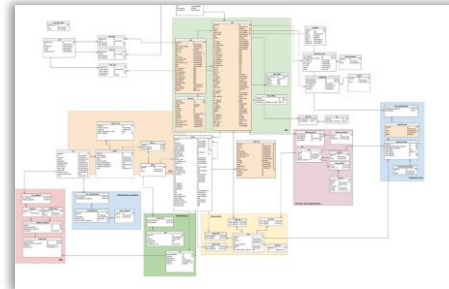
### ArcGIS Data Store



### ArcGIS Enterprise Portal



### GIS Enterprise Geodatabase (SQL) / Asset Register



# Most important Aspects of Meaningful Construction Supervision



**Collecting the Design Data**



**Collection and Evaluation of Factual Data from Construction Sites**



**Scheduling and Reporting**



**Communication and Data Sharing**

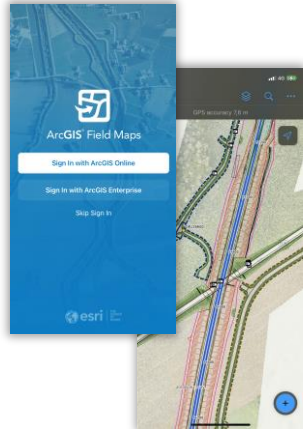
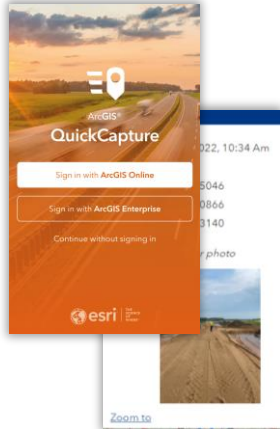




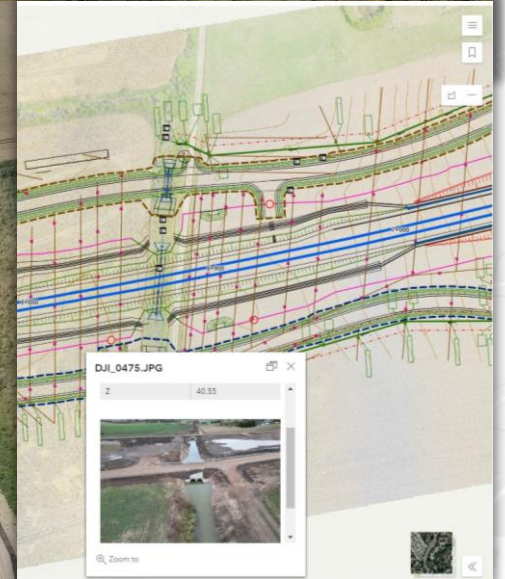
# Collection and Evaluation of Factual Data from Construction Sites

## Sites

Field Applications. On-site Data Collection



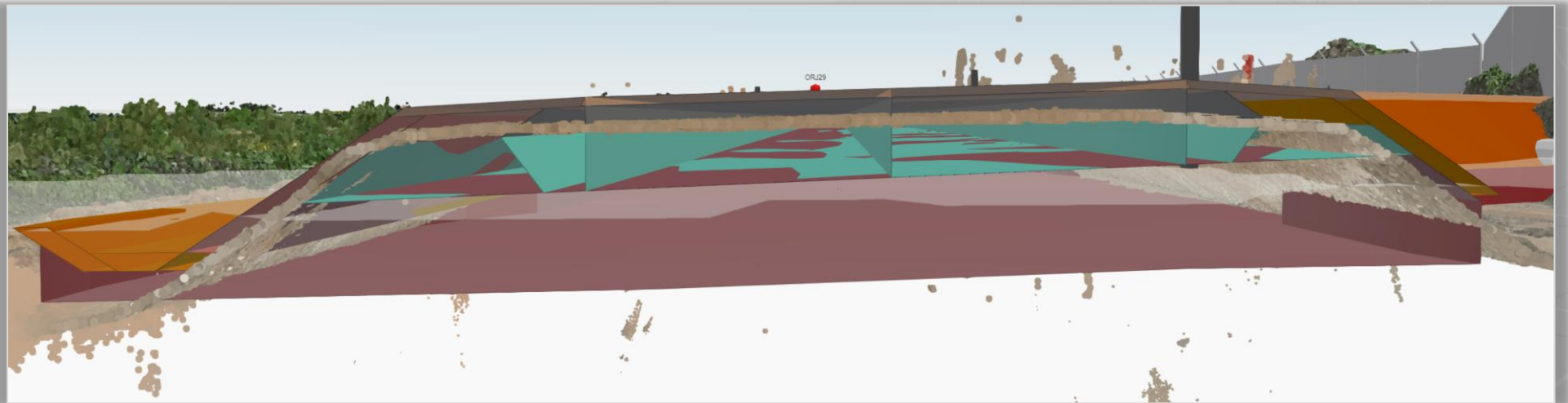
Drones. Quick and Efficient Assessment of the Situation and Data Collection



# Collection and Evaluation of Factual Data from Construction Sites

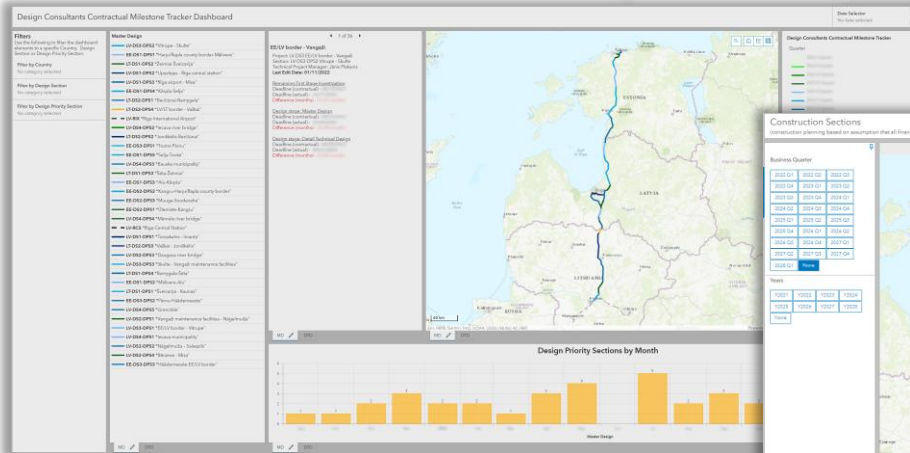
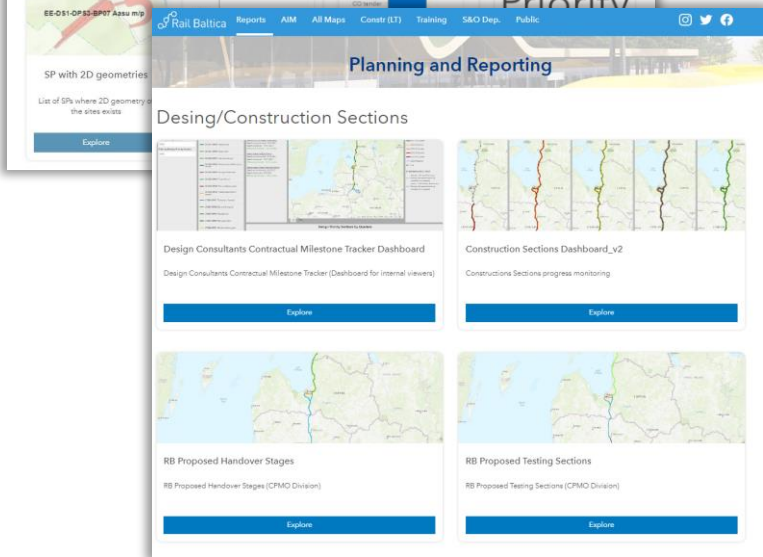
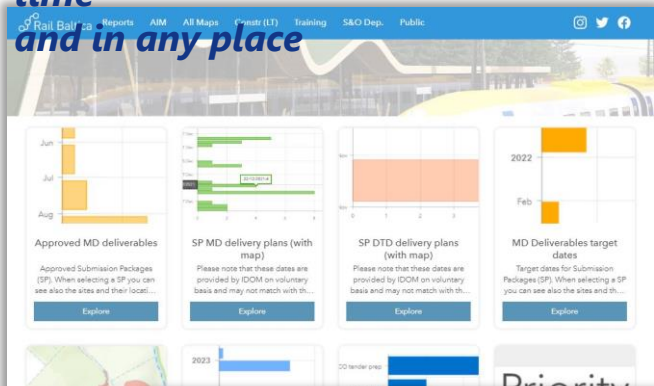


*BIM and Lidar integration allows a quick and simple comparison between what has been designed (BIM) and what has been built (Lidar)*

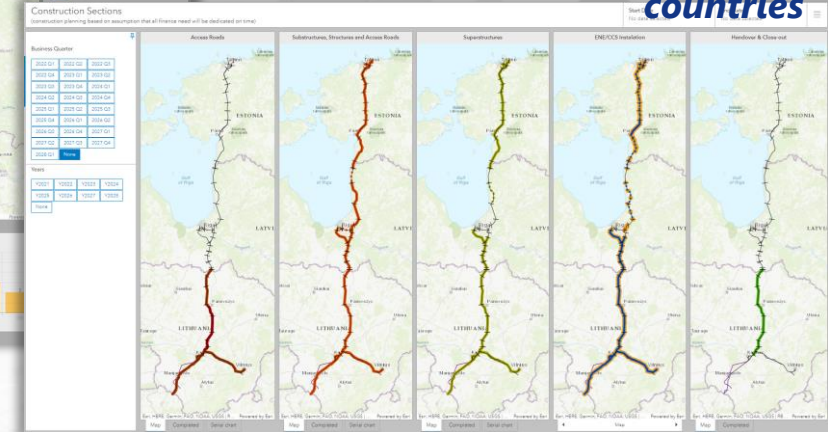


# Scheduling & Reporting

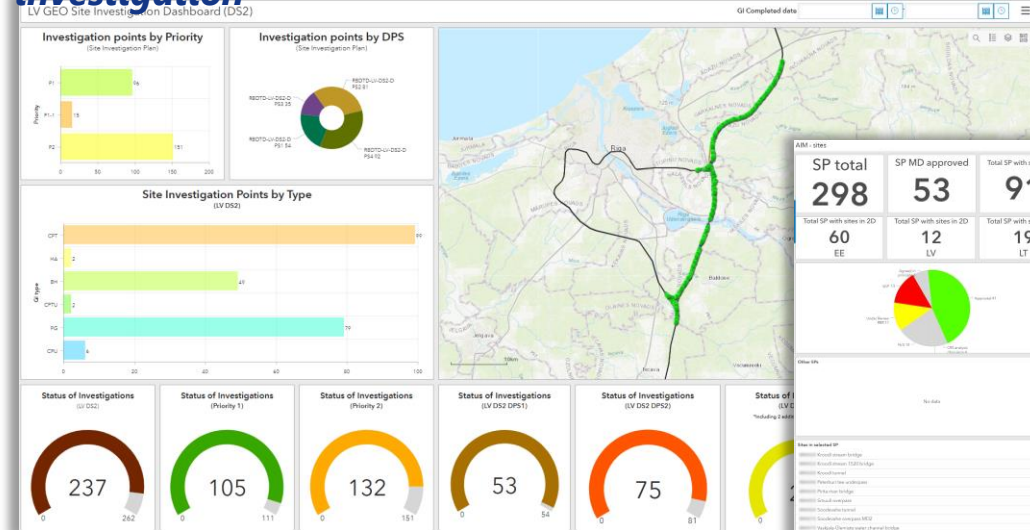
*Dashboards that provide key information and are available to all parties at any time and in any place*



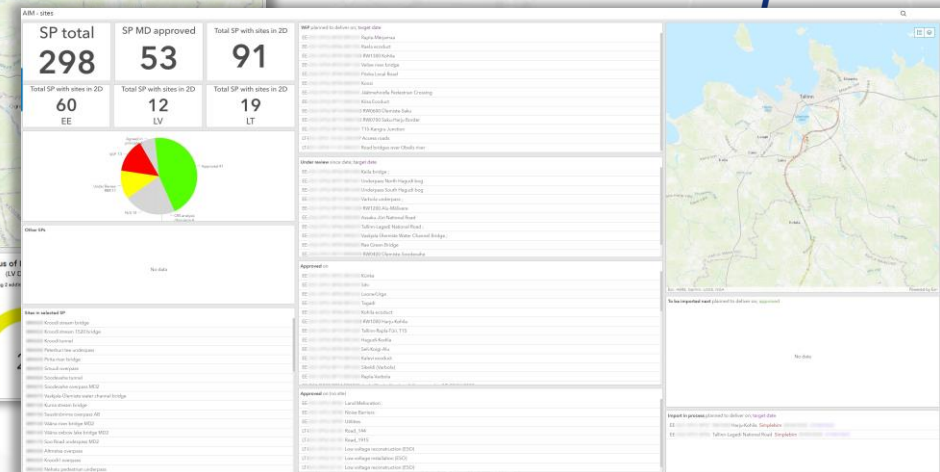
*Chronology of Various types of construction work in all 3 countries*



*Monitoring the progress of geological investigation*



*Monitoring the progress of internal processes*



# Communication & Data Sharing

## 2D/3D Maps



**Fast and efficient information sharing between all participants in the construction process: implementing bodies, coordinators, contractors.**



## Sites for Data Sharing

**Construction Works (LT)**

**LT DS1 DPS2 CO8: Neris Bridge**

LT DS1 DPS2 CO8 Neris Bridge

„Rail Baltica“ linijos Kaunas-Ramygala geležinkelio tilto per Neries upę, Jonavos r. sav., statybos darbai „Rail Baltica Railway Line Section Kaunas-Panevėžys-LT/LV (Phase I): Construction of a New Bridge over the River Neris“

**LT DS1 DPS2 CO8 Neris Bridge (3D)**

„Rail Baltica“ linijos Kaunas-Ramygala geležinkelio tilto per Neries upę, Jonavos r. sav., statybos darbai „Rail Baltica Railway Line Section Kaunas-Panevėžys-LT/LV (Phase I): Construction of a New Bridge over the River Neris“

**LT-DS1-DPS2/DPS3 Railway Bed & Structures & Access Roads**

LT-DS1-DPS2/DPS3 Railway Bed & Structures & Access Roads

„Rail Baltica“ linija Kaunas-Ramygala 1435 mm standard gauge railway track on section Šveicarija-Zeimiai, Jonava dist. mun., construction design (LT-DS1-DPS2) and „Rail Baltica“ linija Kaunas-Ramygala 1435 mm standard gauge railway track ...

**LT-DS1-DPS2/DPS3 Railway Bed & Structures & Access Roads (3D)**

„Rail Baltica“ linija Kaunas-Ramygala 1435 mm standard gauge railway track on section Šveicarija-Zeimiai, Jonava dist. mun., construction design (LT-DS1-DPS2) and „Rail Baltica“ linija Kaunas-Ramygala 1435 mm standard gauge railway track ...

**DS1 DPS2 CO3&CO10 - Access Roads**

LT-DS1-DPS2 CO3&CO10 Mel&Access Roads

Construction works of local roads of Rail Baltica line Kaunas - Ramygala railway section Šveicarija - Zeimiai, Jonava district

**LT-DS1-DPS2 CO3&CO10 Mel&Access Roads (3D)**

Construction works of local roads of Rail Baltica line Kaunas - Ramygala railway section Šveicarija - Zeimiai, Jonava district

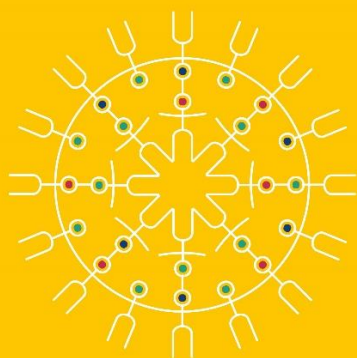


**OUR VISION**

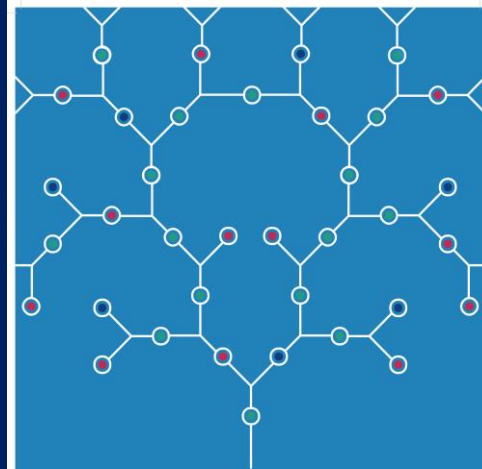
**Connected Baltics in a  
connected Europe**

**OUR MISSION**

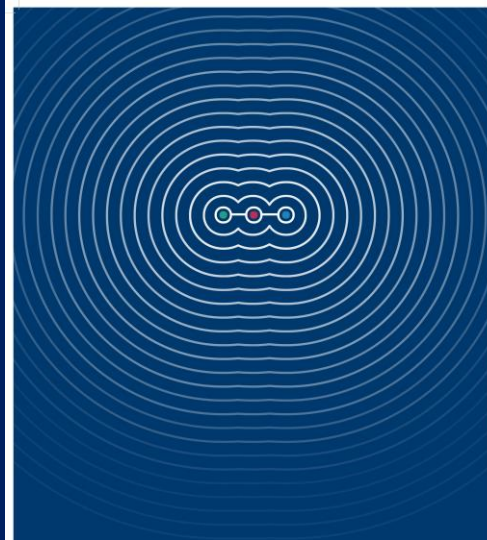
**We are delivering a seamless mobility for  
people, goods and services to accelerate  
social and economic development in the  
Baltics and beyond**



**WE VALUE PEOPLE**



**WE VALUE PROFESSIONALISM**



**WE VALUE PURPOSE**

**Thank you!**