

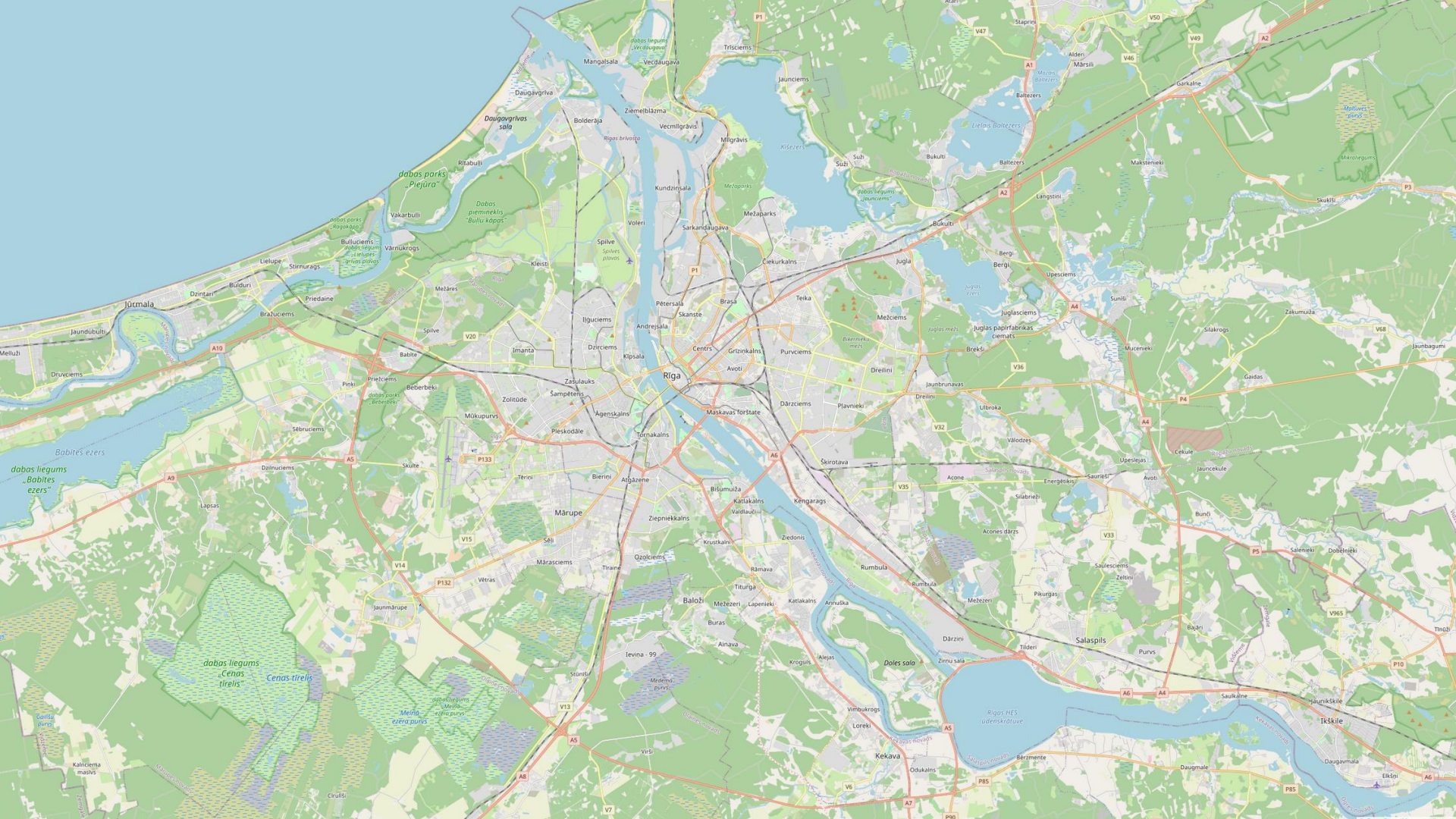
OSMF board – what are they
even doing?

Mateusz Konieczny, from OSMF board

Disclaimer:
Not an official OSMF
statement

What is OpenStreetMap?

(often shortened to OSM)



What is OpenStreetMap Foundation?

(often shortened to OSMF)

"international not-for-profit organization supporting, but not controlling, the OpenStreetMap Project. It is dedicated to encouraging the growth, development and distribution of free geospatial data and to providing geospatial data for anyone to use and share"

osmfoundation.org

"organization supporting, but
not controlling, the
OpenStreetMap Project"

What is OSMF Board?

What is OSMF Board?

Elected people responsible for running OSMF

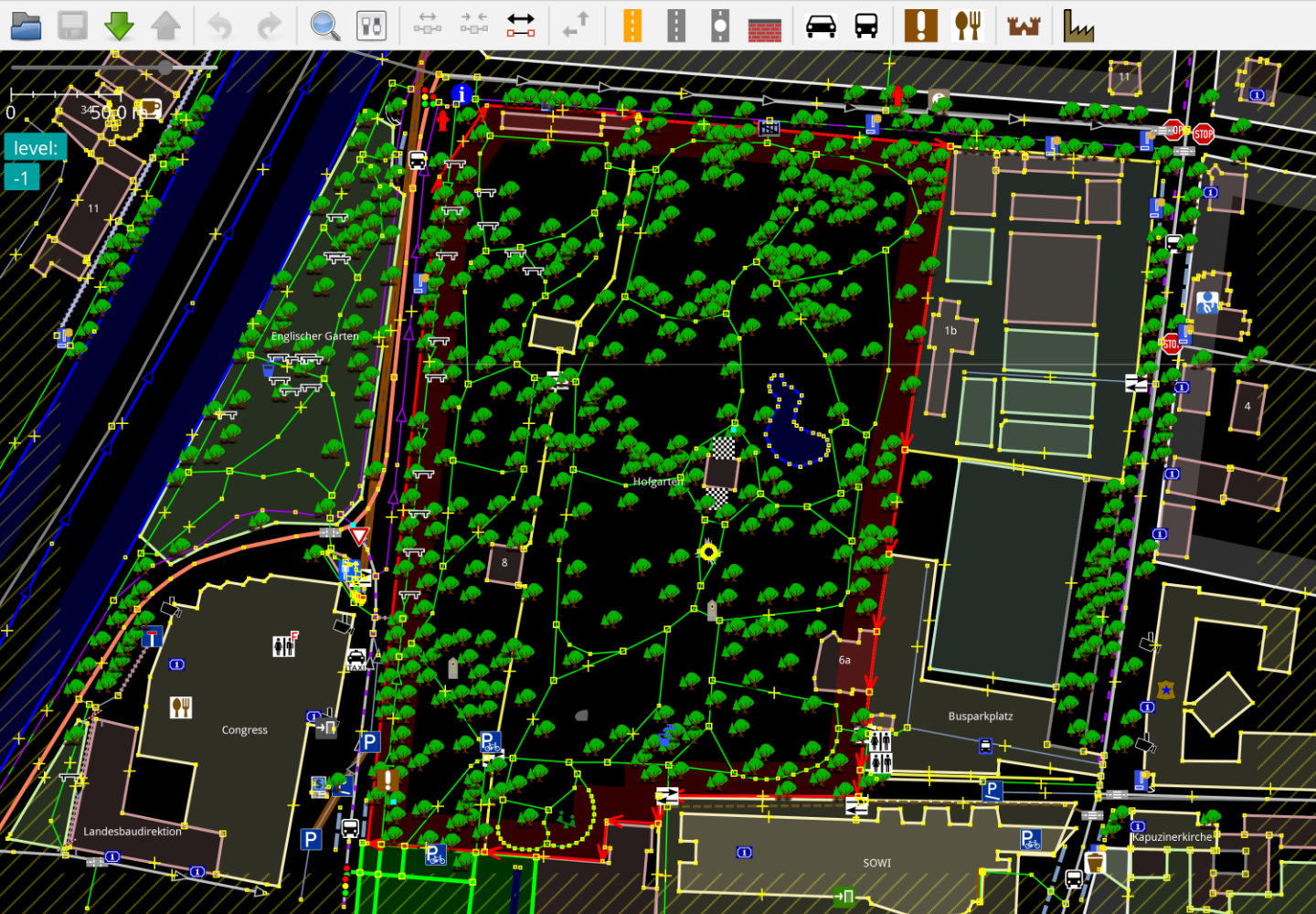
OSMF and OSMF board

OSMF board is only part of OSMF,
OSMF is only part of OSM

OpenStreetMap

Foundation Board

Mapping:
fundamental part of
OpenStreetMap



Layers

- [1] **Data Layer 1**

Tags: 5 / Memberships: 0

Geography/Land use/Park ...

Key	Value
leisure	park
name	Hofgarten
wikidata	Q874662
wikimedia_commons	File:Innsbruck, Hofga...
wikipedia	de:Hofgarten (Innsbr...

+ Add Edit Delete

Sel.: Rel.:0 / Ways:1 / Nodes:0

Hofgarten (20 nodes)

Select Search History





CC-BY-SA-2.0 by
SK53 OSM



CC-BY-SA 4.0 by Eugene Alvin Villar



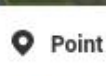
CC-BY-SA-2.0 by
SK53 OSM



Edit feature



Inspect



Point



Add Feature



Area



Undo / Redo



Save

Feature Type



Viewpoint

i

Fields

Direction (Degrees Clockwise)

i

45, 90, 180, 270

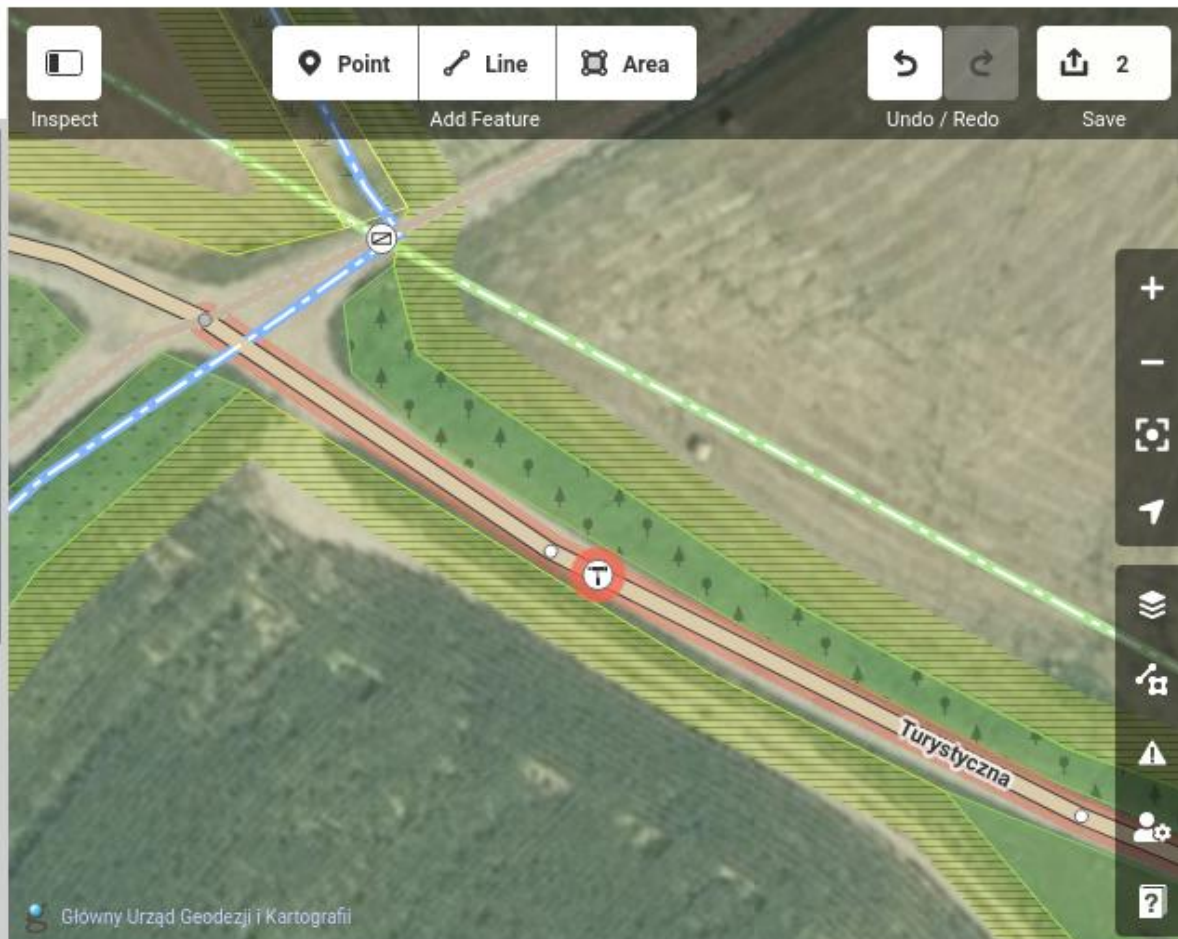
Add field:

Description, Elevation, Fix Me...

Tags (1)



tourism=viewpoint



Główny Urząd Geodezji i Kartografii

25 m

lysław Komorek, deleted_account, elgon, and 6 others



2.19.6

OpenStreetMap Foundation
board does NOT decide what
OSM community maps or how
to map

OpenStreetMap Foundation
board does NOT decide what
OSM community maps or how
to map

see https://wiki.osmfoundation.org/wiki/Mission_Statement

OSMF directors can map like
anyone else
(and in my personal opinion:
should be mappers)

Working groups

"If you want the OSMF to produce a monthly newsletter, the most powerful thing you can do is join CWG [Communication Working Group] and start working on it"

<https://osm.gryph.de/2017/09/so-you-want-to-be-an-osmf-board-member/>

Working groups

- Communication Working Group
- Licensing Working Group
- Local Chapters and Communities Working Group
- Membership Working Group
- State of the Map Working Group

Working groups

- Operations Working Group
 - planning and maintenance of the OSM API and servers
- Engineering Working Group
 - coordination of software development
 - handles software development paid for by the OSMF
 - handles programs such as Google Summer of Code
- Data Working Group
 - dealing with vandalism, can block users

Why OSMF exists?

Core infrastructure

- Someone/something needs to
 - own domain, name
 - run servers
 - decide what is deployed on core servers (<https://www.openstreetmap.org/>)
 - legal paperwork
 - obtain funds to cover that
- Above is just an absolute minimum, but already needs an organisation
- OSMF is doing more than this bare minimum

Doocracy

OSMF is not some company
where board members have
legions of minions following
their orders.

OSMF board does
NOT decide what OSM
community maps or
how to map

OSMF board is
responsible for
ensuring that people
can map

and that
OpenStreetMap
community is healthy
and growing

How it is achieved?
(examples)

Operating Annual
General Meetings,
including elections

iD development (default online editor)

The screenshot displays the OpenStreetMap iD editor interface. The browser address bar shows the URL: <https://www.openstreetmap.org/edit?editor=id#map=19/56.94816/24.10582>. The page title is "OpenStreetMap" with sub-links for "Edit", "History", and "Export". The main navigation bar includes "GPS Traces", "User Diaries", "Communities", "Copyright", "Help", "About", and a user profile for "Mateusz Konieczny".

The central map area shows a 3D aerial view of a city street intersection. The street names visible are "Palasta iela", "Birkapa gāle", "Maza Skolas iela", "Krusteja", "Herdeņa bulvāris", and "T.L.Čakševiča Krastmāis". The map is overlaid with a grid and various street features are highlighted in different colors (orange, red, blue). A toolbar at the top of the map area includes "Point", "Line", and "Area" tools, along with "Inspect", "Add Feature", "Undo/Redo", and "Save" buttons.

The left sidebar is titled "Edit feature" and contains the following sections:

- Feature Type:** "Living Street" (selected).
- Fields:**
 - Name:** "Palasta iela"
 - One Way:** "Assumed to be No"
 - Speed Limit:** "40, 50, 60..." (km/h)
 - Lanes:** "1, 2, 3..."
 - Surface:** "Sett"
 - Structure:** "Bridge", "Tunnel", "Embankment", "Cutting", "Ford" (all unselected)

At the bottom of the sidebar, there is a link to "View on openstreetmap.org".

Aerial:

LĢIA (Latvian Geospatial Information Agency) provided these open data (CC0). WMS service is provided by LVM (Latvian State Forestry).

Staffed by OpenStreetMap Foundation (Martin Raifer - @tyrasd)

The screenshot displays the OpenStreetMap web editor interface. The browser address bar shows the URL <https://www.openstreetmap.org/edit?editor=id#map=19/56.94816/24.10582>. The page title is "OpenStreetMap" with sub-links for "Edit", "History", and "Export". The main navigation bar includes "GPS Traces", "User Diaries", "Communities", "Copyright", "Help", "About", and a user profile for "Mateusz Konieczny".

The central map area shows an aerial view of a city street grid. A red dashed line highlights a specific street, "Palasta iela". The map includes various street names such as "Birkapa gāle", "Maza Skolas iela", "Krusteja", "Herdeņa ielums", and "T.L.Čakstmaņa Krastmala". A sidebar on the left is titled "Edit feature" and contains the following sections:

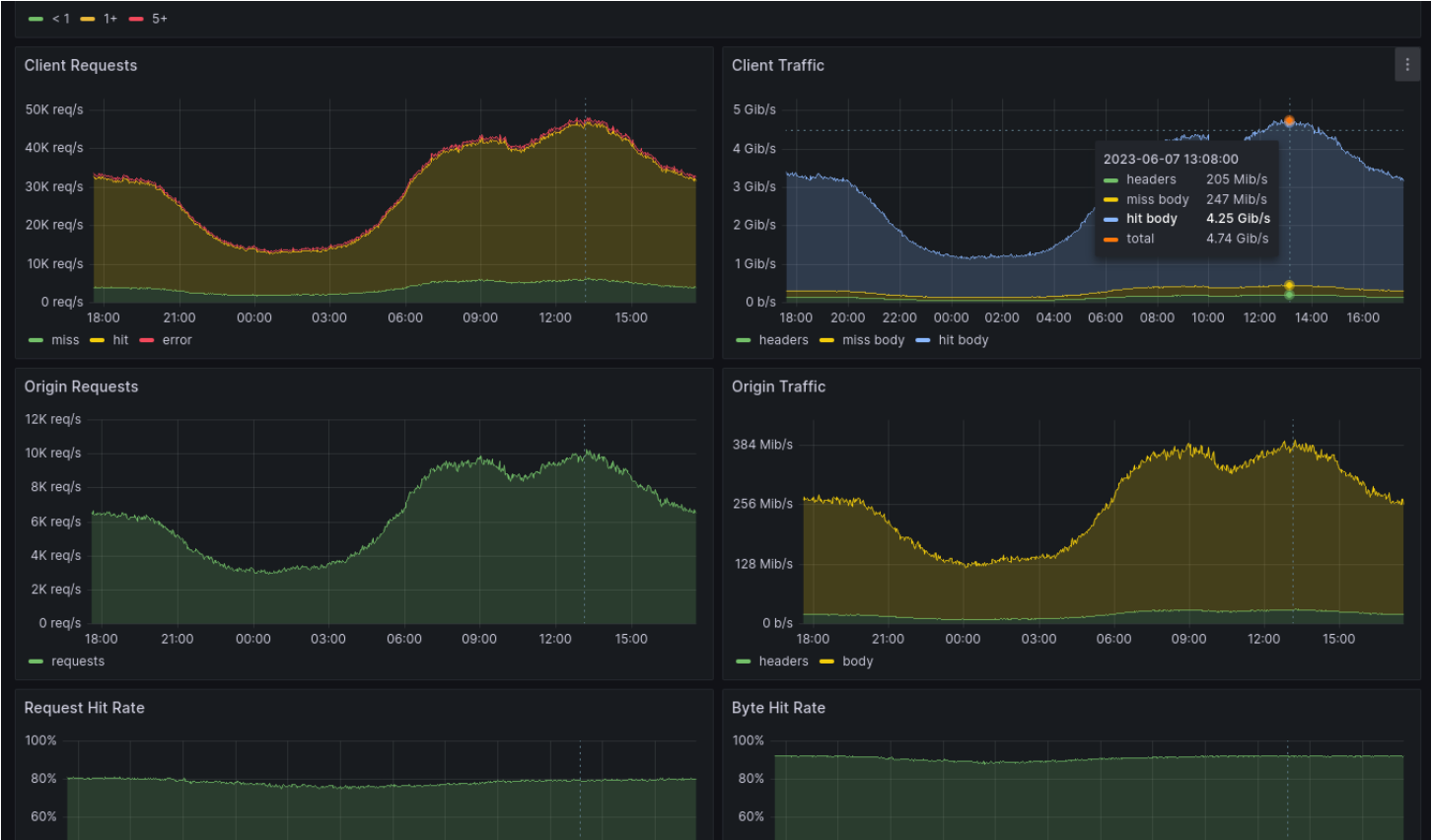
- Feature Type:** Living Street
- Fields:**
 - Name: Palasta iela
 - One Way: Assumed to be No
 - Speed Limit: 40, 50, 60... km/h
 - Lanes: 1, 2, 3...
 - Surface: Sett
 - Structure: Bridge, Tunnel, Embankment, Cutting, Ford

The bottom of the interface shows a status bar with "Edits by" and a user count of 28.

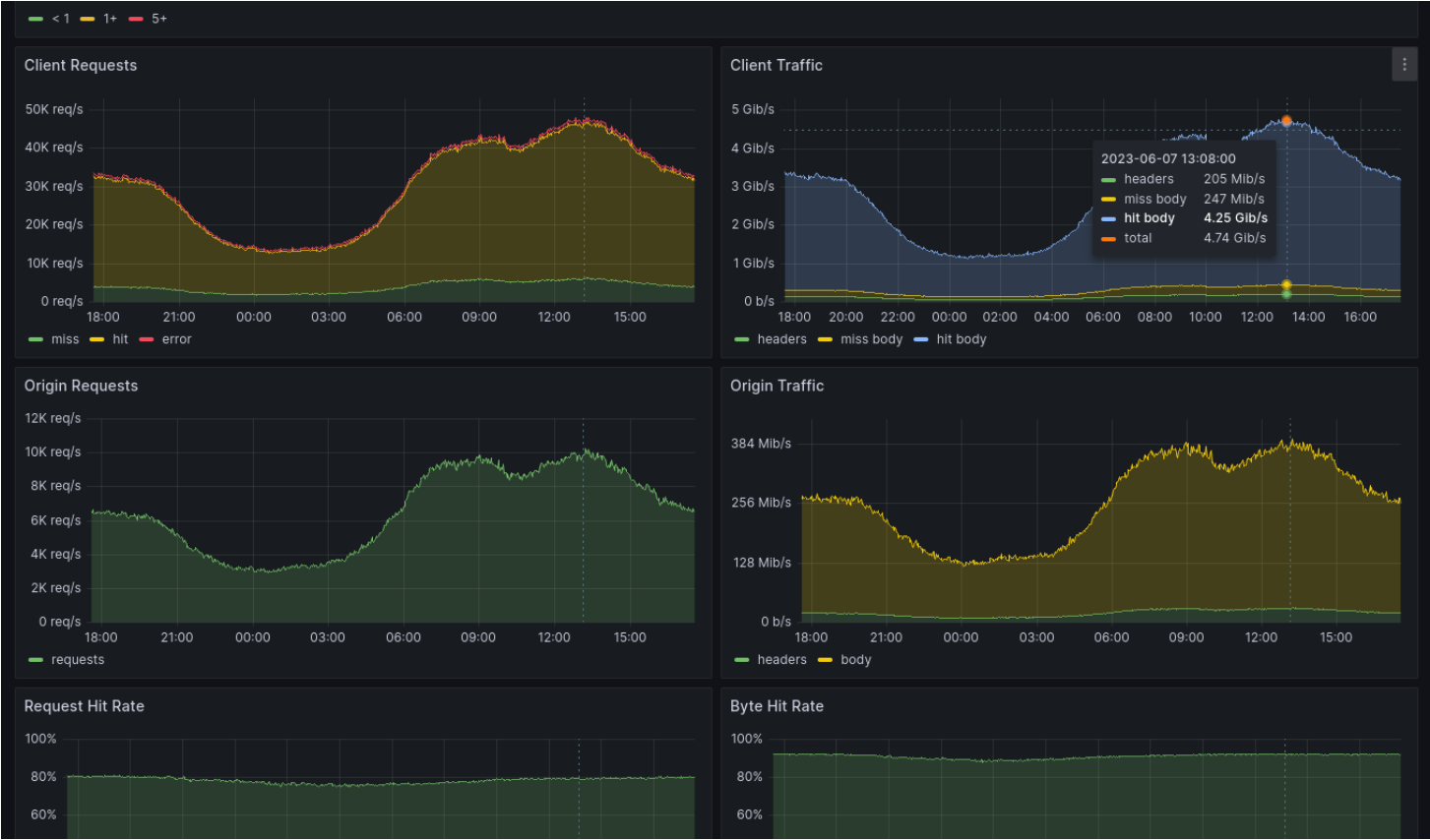
Aerial:

LĢIA (Latvian Geospatial Information Agency) provided these open data (CC0). WMS service is provided by LVM (Latvian State Forestry).

Site Reliability Engineer



Staffed by OpenStreetMap Foundation (Grant - @firefishy)



Defending OpenStreetMap license

Handling appeals of Working Group Decisions

Budgeting

How it is achieved?
(on lower level)

Communication

Communication

- Monthly public meetings
- Monthly closed meetings
- Board chat
- Emails
- Official OSM forums
- Mailing lists
- Contact with external companies/projects/people
- Fundraising

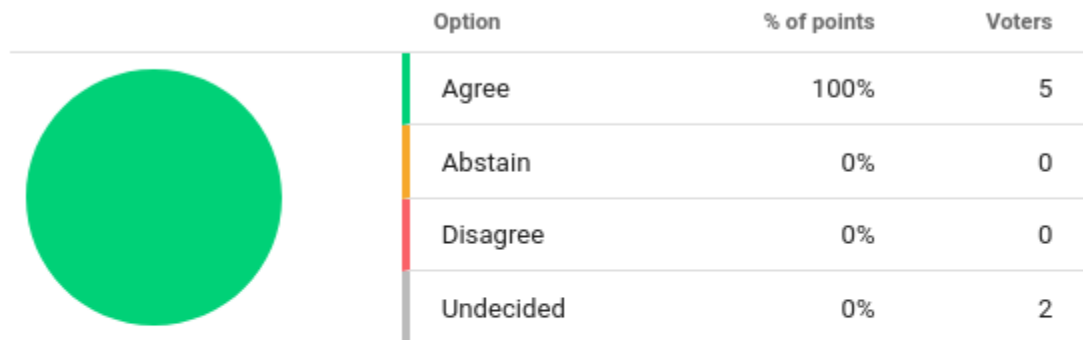
Example of emails

- Drafts of what will be published by OSMF
- Budgeting plans
- Communication with working groups
- Personnel
- Feedback as requested (surprisingly rare)
- Ban appeals
- Meeting planning (timezones!)
- Trademarks
- Disputed territories

Circular resolutions

Examples: https://wiki.osmfoundation.org/wiki/Board/Minutes/2023-02#Circular_Resolutions

Current results



5 of 7 people have voted (71%)

[change your vote](#)

[invite](#)

Votes

You are invited!

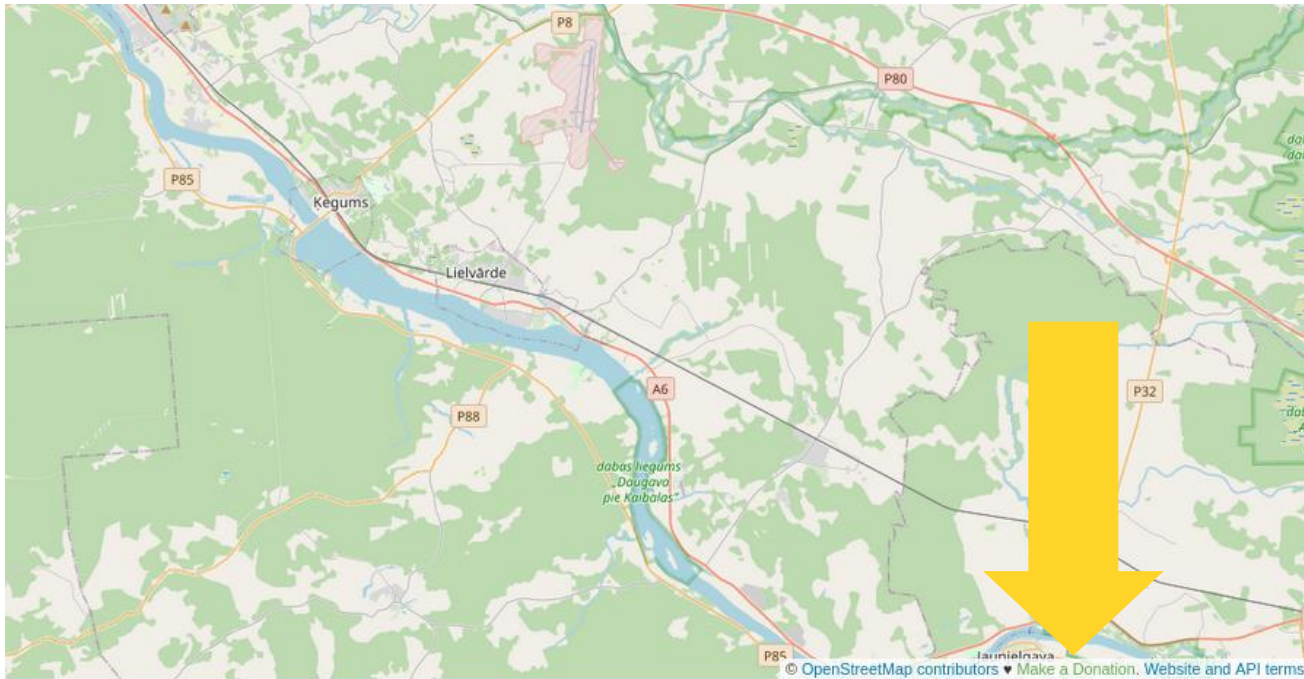
- Using OpenStreetMap data
- Mapping
 - try GoMap!! and EveryDoor on Apple devices
 - try EveryDoor, StreetComplete, Vespucci on Android devices
 - try in-browser editor at openstreetmap.org
- Working groups
- Joining OSMF
 - £15 a year
 - for free if you are an active OpenStreetMap contributor
 - 42 days of editing activity within last year
 - similar activity

Fundraising

- Just current operations require raising funds this year
 - note very lean operations
 - single paid person looking after servers
 - nearly everyone volunteers, including OSMF board
- Diversity in funding sources is very helpful
 - having 50% of funding from a single company would be problematic
- Consider donating something from your entertainment budget

Fundraising

- <https://donate.openstreetmap.org/>



Editing

- Please join us!

